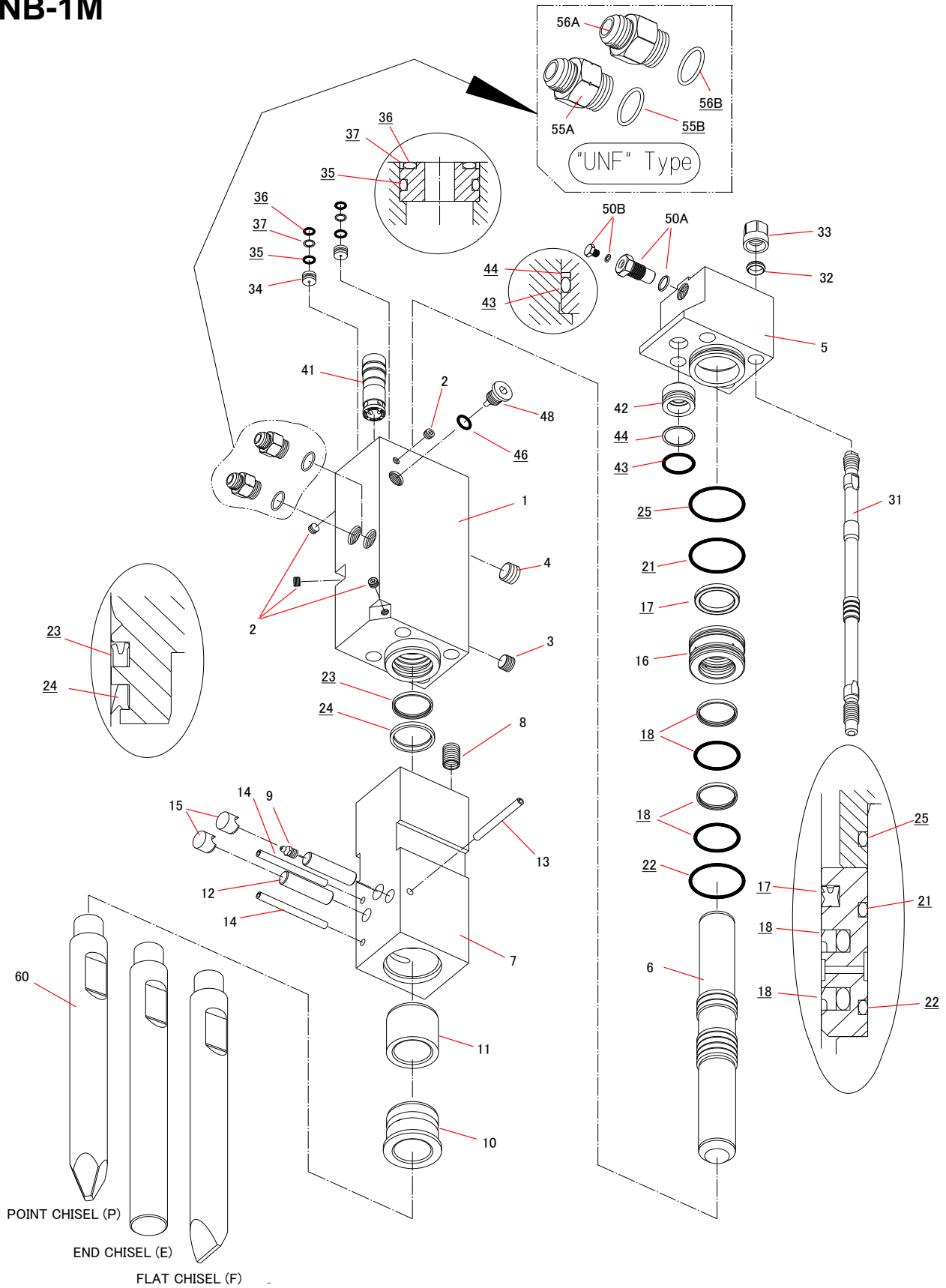


TNB-1M



TNB-1M

2017.05.26

No.5

Sym	Part Code	Description	Q'ty	Ser.No.	Int	Remarks	Kit	Sym	Part Code	Description	Q'ty	Ser.No.	Int	Remarks	Kit
	41510501C	Cylinder CP	1CP	448~				41	415105200	Control Valve	1	448~			
1	415105010	Cylinder	1	448~			C	42	415105220	Control Valve Cap	1	448~			
2	134901101	Hex Plug	4	448~			C	43	131102103	O-Ring	1	448~			S
3	134901104	Hex Plug	1	448~			C	44	131122003	Back Up Ring	1	448~			S
4	134901106	Hex Plug	1	448~			C	46	131108014	O-Ring	1	448~			S
5	415105030	Cylinder Cover	1	448~				48	415105231	Choke Plug	1	448~			
6	415105040	Piston	1	448~				50	41514130J	Gas Valve CP	1CP	448~			
	41510505D	Chisel Holder CP	1CP	448~				50A	41514130G	Gas Valve Body CP	1CP	448~			G
7	415105050	Chisel Holder	1	448~			H	50B	41514132E	Gas Valve Plug CP	1CP	448~			G
8	131018015	Helisert	4	448~			H	55A	182092010	Hose Adapter IN "UNF"	1	448~		3/4-16UNF	
9	135013001	Grease Nipple	1	448~			H	55B	131108023	O-Ring	1	448~			S
10	415105060	Chisel Bushing	1	448~			H	56A	182092021	Hose Adapter OUT "UNF"	1	448~		3/4-16UNF	
11	415105140	Chisel Holder Bushing	1	448~			H	56B	131108023	O-Ring	1	448~			S
12	415105100	Retainer Pin	2	448~				60	415105410	Moil Point (P)	1	448~		L=480	
13	130608090	Spring Pin	1	448~				61	415105420	Blunt (E)		448~		L=480	
14	130608100	Spring Pin	2	448~			H	62	41510543	Cross Cut Chisel (F)		448~		L=480	
15	136402031	Retainer Pin Plug	2	448~											
16	415105130	Packing Bushing	1	448~					41510580D	Master Seal Kit	1Set	448~			
17	131228008	Gas Seal	1	448~			S								
18	131222008	Step Seal	2	448~			S								
21	131102009	O-Ring	1	448~			S								
22	131102109	O-Ring	1	448~			S								
23	131225008	Oil Seal	1	448~			S								
24	131219008	Dust Seal	1	448~			S								
25	131102009	O-Ring	1	448~			S								
31	415105160	Side Bolt	4	448~											
32	136306014	Side Bolt Ring	4	448~											
33	134206041	Side Bolt Nut	4	448~											
34	415110300	Cylinder Plug	2	448~											
35	131108009	O-Ring	2	448~			S								
36	131101007	O-Ring	2	448~			S								
37	131121007	Back Up Ring	2	448~			S								

Master Seal Kit consists of the parts marked "S".
(Individual seals NOT sold separately)

Cylinder CP consists of the parts marked "C".

Chisel Holder CP consists of the parts marked "H".

Gas Valve CP consists of the parts marked "G"
(#50A NOT sold separately)

O-RING is included to #55A & #56A UNF type HOSE ADAPTER.
(UNF type HOSE ADAPTER is not supplied as bare condition. O-ring always comes together.)

Long chisel and Core Chisel is an option.

INT(interchangeability)

- Interchangeable old ↔ new
- △ Interchangeable old → new
- ▲ Interchangeable old ← new
- × Not interchangeable